



4/133 Gisborne Road Darley VIC

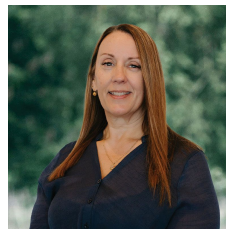
3 2 1

Welcome to a stunning selection of brand-new, stylish townhouses located in the heart of Darley. Each townhouse offers a unique floor plan, meticulously designed with modern fixtures and high-quality finishings, ensuring that no two homes are alike.

View : <https://www.bacchusmarshrealestate.com.au/lease/vic/west/darley/residential/townhouse/8082996>

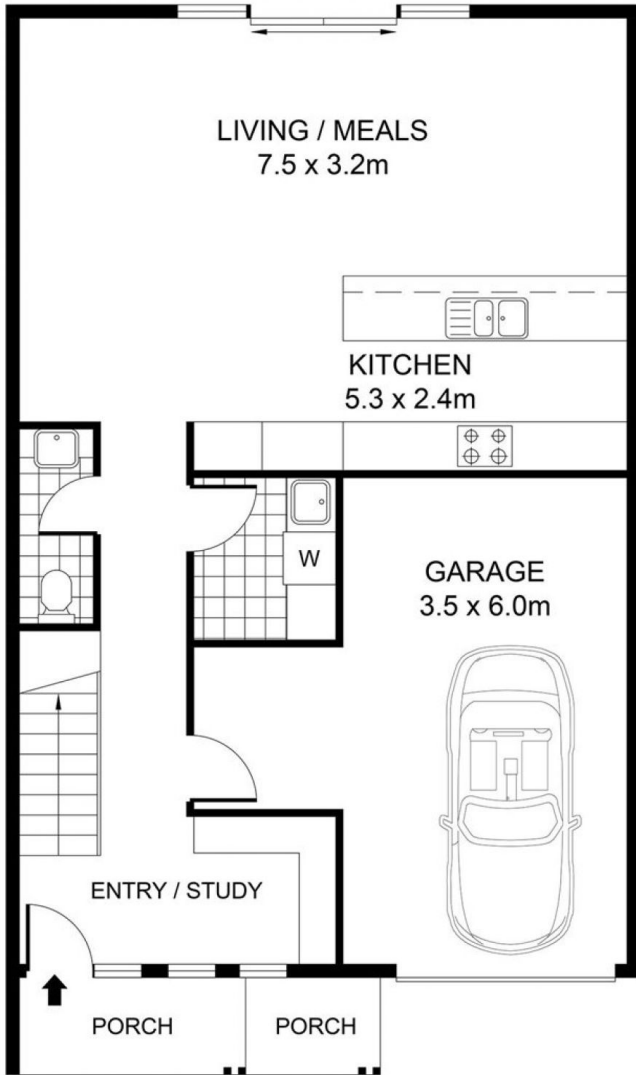
Townhouse 4 | 3 bedroom + study, 2 bathroom, 2 living areas, single garage

Brilliantly located approx. 200mtrs from the freeway entrance to Melbourne or Ballarat, Darley Medical Centre, Dentist & Darley Plaza Shopping Centre and around 300mtrs to Darley Park & Hungry Jacks.

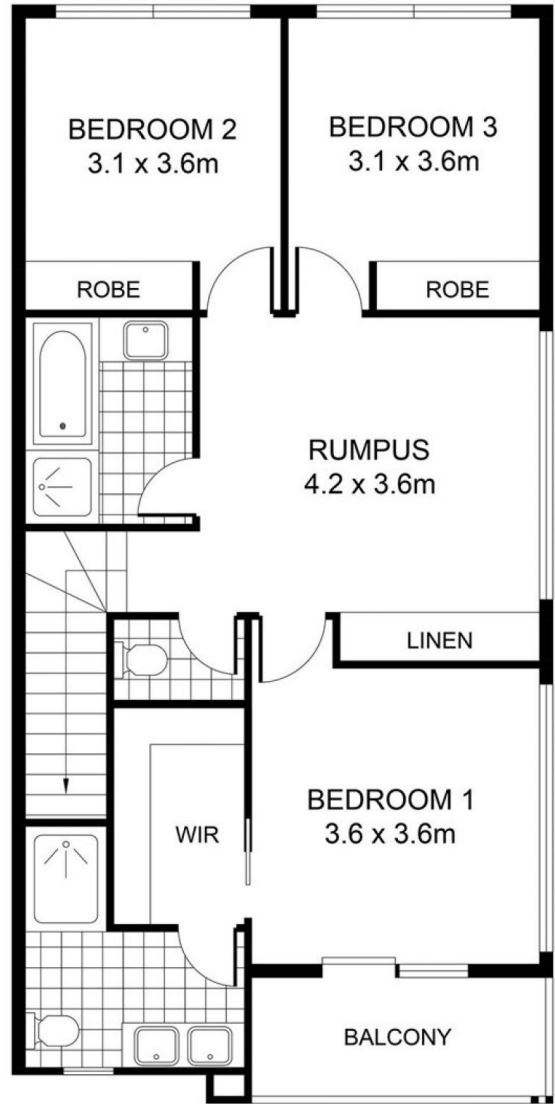


Sandra Coric
03 5367 2333

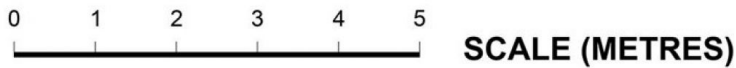
Available now.
For all enquiries please email



GROUND FLOOR



FIRST FLOOR



PLANS SHOWN ONLY INDICATIVE OF LAYOUT. DIMENSIONS ARE APPROXIMATE.



INT : 151m² (approx)
EXT : 11m² (approx)
GARAGE : 26m² (approx)

UNIT 4, 133 GISBORNE ROAD

DARLEY