



1, 2 & 3/133 Gisborne Road Darley VIC

3 2 1

Welcome to a stunning selection of brand-new, stylish townhouses, located in the heart of Darley. Each townhouse offers a unique floor plan, meticulously designed with modern fixtures and high-quality finishings, ensuring that no two homes are alike.

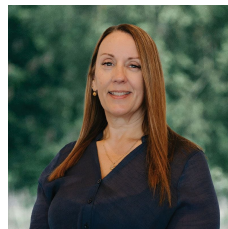
Townhouse 1 | 3 bedroom, 2 bathroom, 2 living areas, single garage - NOW LEASED

Townhouse 2 | 3 bedroom, 2 bathroom, 2 living areas, single garage - NOW LEASED

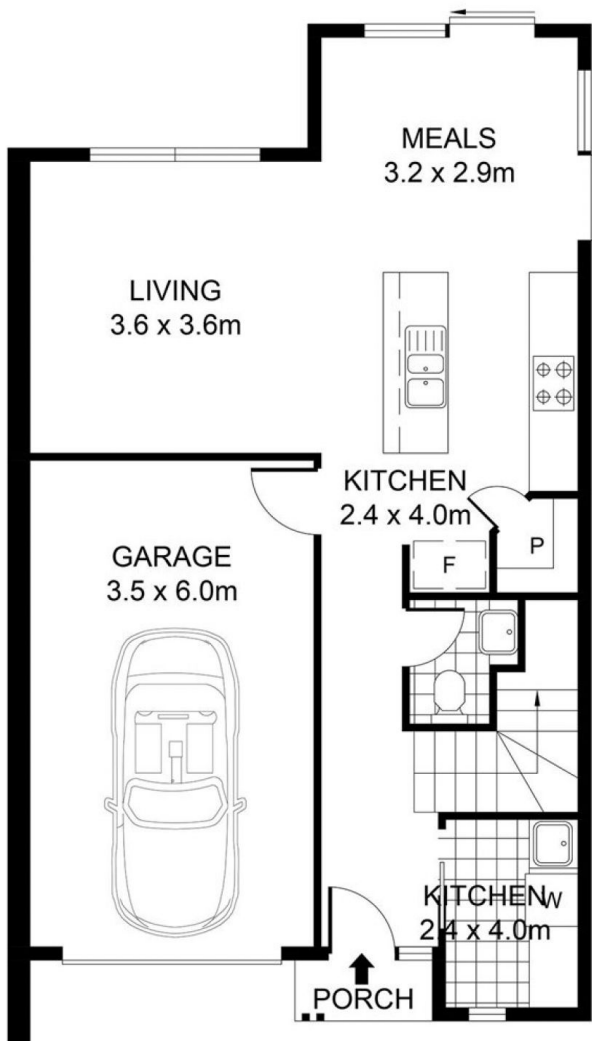
Townhouse 3 | 3 bedroom, 2 bathroom, 2 living areas, single garage - NOW LEASED

Brilliantly located approx. 200mtrs from the freeway entrance to Melbourne or Ballarat, Darley Medical Centre, Dentist & Darley Plaza Shopping Centre and around

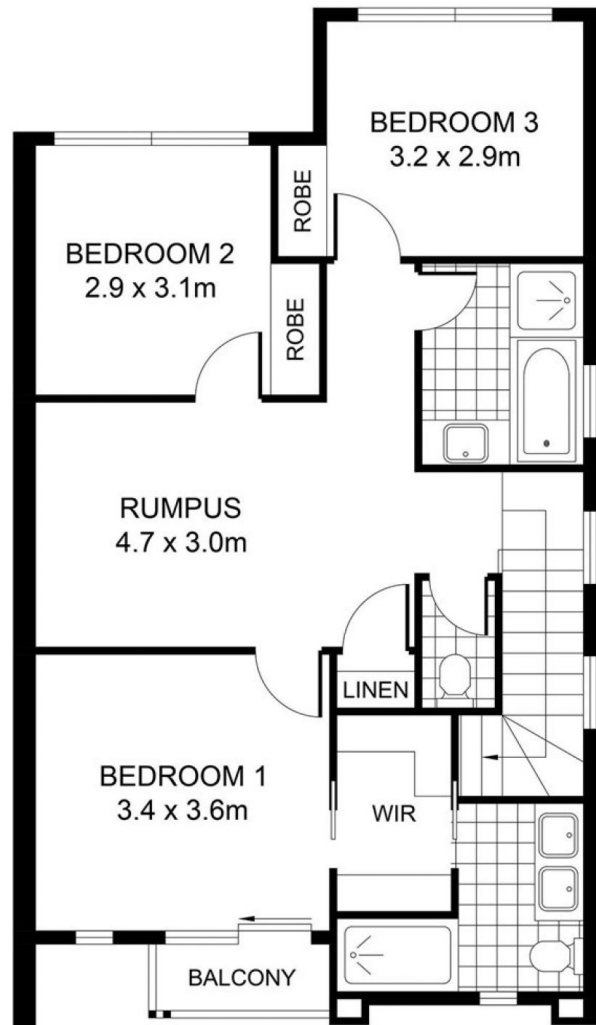
View : <https://www.bacchusmarshrealestate.com.au/lease/vic/west/darley/residential/townhouse/8082993>



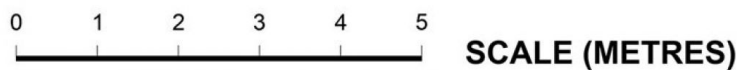
Sandra Coric
03 5367 2333



GROUND FLOOR



FIRST FLOOR



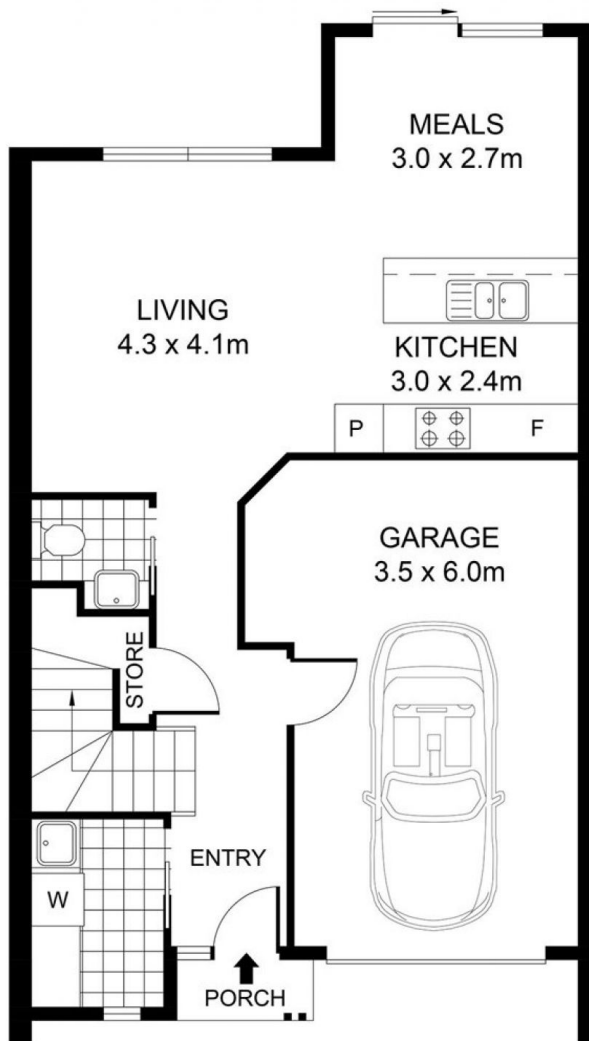
PLANS SHOWN ONLY INDICATIVE OF LAYOUT. DIMENSIONS ARE APPROXIMATE.



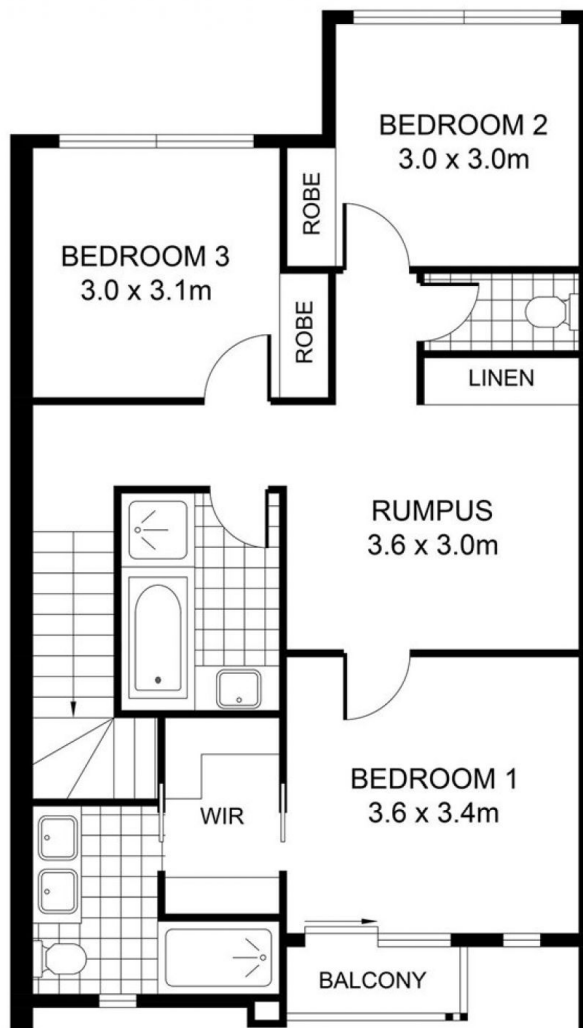
INT : 134m² (approx)
EXT : 3m² (approx)
GARAGE : 23m² (approx)

UNIT 1, 133 GISBORNE ROAD

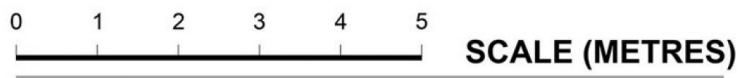
DARLEY



GROUND FLOOR



FIRST FLOOR



PLANS SHOWN ONLY INDICATIVE OF LAYOUT. DIMENSIONS ARE APPROXIMATE.



INT : 131m² (approx)
EXT : 3m² (approx)
GARAGE : 24m² (approx)

UNIT 2, 133 GISBORNE ROAD

DARLEY