



6 Baillie Court Bacchus Marsh VIC

4 2 2

Nestled in a serene court location, this charming four-bedroom home boasts impressive street appeal with its inviting façade and well-maintained front garden.

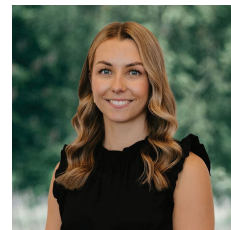
Ideal for families, it features two spacious living areas, one of which is enhanced by a cozy wood heater, perfect for those chilly evenings and 4 bedrooms. The property includes two bathrooms, with two of the bedrooms sharing a convenient double entry ensuite, providing both privacy and functionality.

The large kitchen offers ample space for culinary enthusiasts, making it a renovation delight with endless potential. The meals area is equipped with a split system, ensuring comfort year-round.

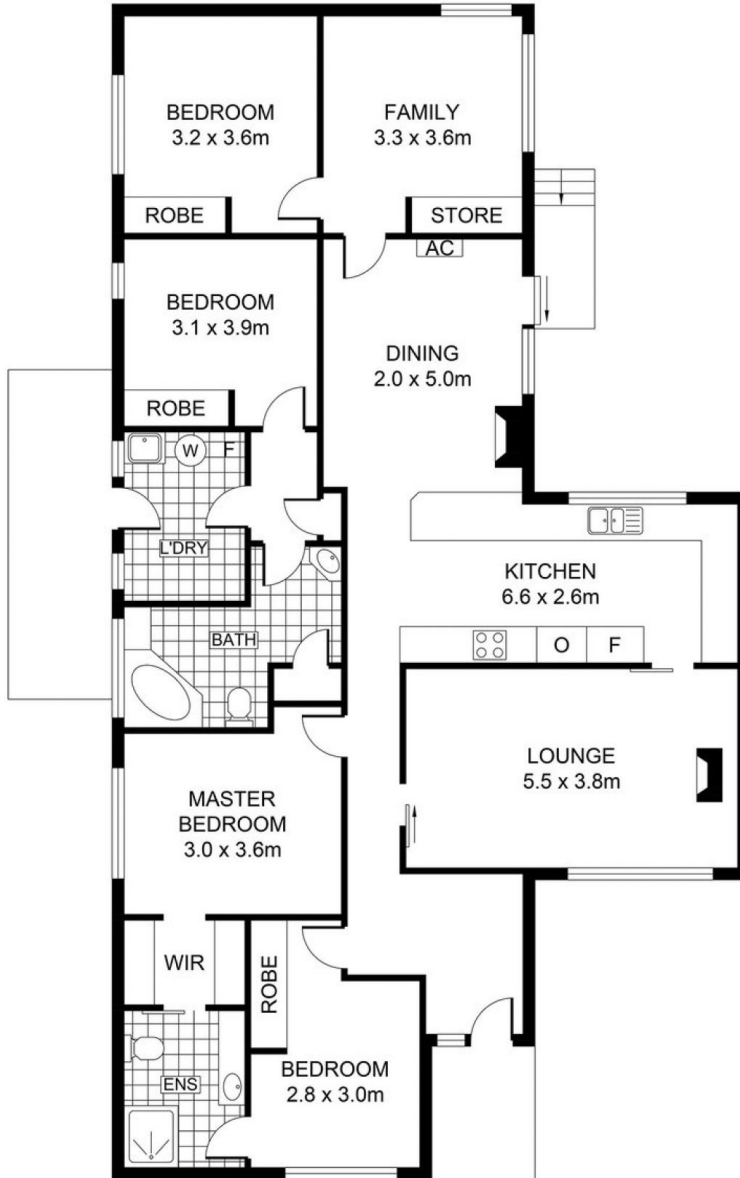
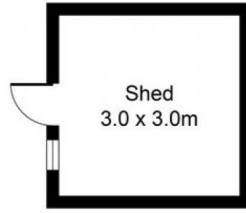
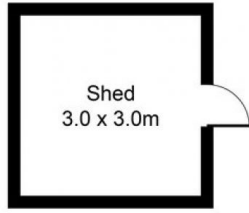
Price : \$ 610,000
Land Size : 1005 sqm
View : <https://www.bacchusmarshrealestate.com.au/sale/vic/west/bacchus-marsh/residential/house/8030056>



Steve Creese
03 5367 2333



Charlee MacPherson
03 5367 2333



PLANS SHOWN ONLY INDICATIVE OF LAYOUT. DIMENSIONS ARE APPROXIMATE.

INT : 144m² (approx)
 SHED : 18m² (approx)
 GARAGE : 00m² (approx)

6 BAILLIE CRESENT

BACCHUS MARSH