

18 Drever Place Maddingley VIC

4 2 2

A distinguished property located in the sought-after estate of Stonehill. This exquisite 4-bedroom, 2-bathroom residence with a double garage is a true gem, seamlessly blending comfort, style, character, and functionality.

Upon entering, one immediately appreciates the meticulous attention to detail and the versatile floorplan that defines this home. The master bedroom stands as a private haven, complete with a walk-in robe and an ensuite, providing an ideal retreat within the residence. The property also features a generously sized separate formal lounge, perfect for entertaining guests or enjoying peaceful moments.

The heart of the home lies in the spacious central kitchen adorned with laminate benches and high-quality stainless-steel appliances, including a dishwasher, gas

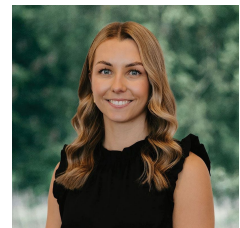
Price : \$ 585,000

Land Size : 400 sqm

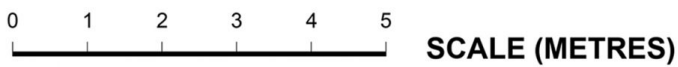
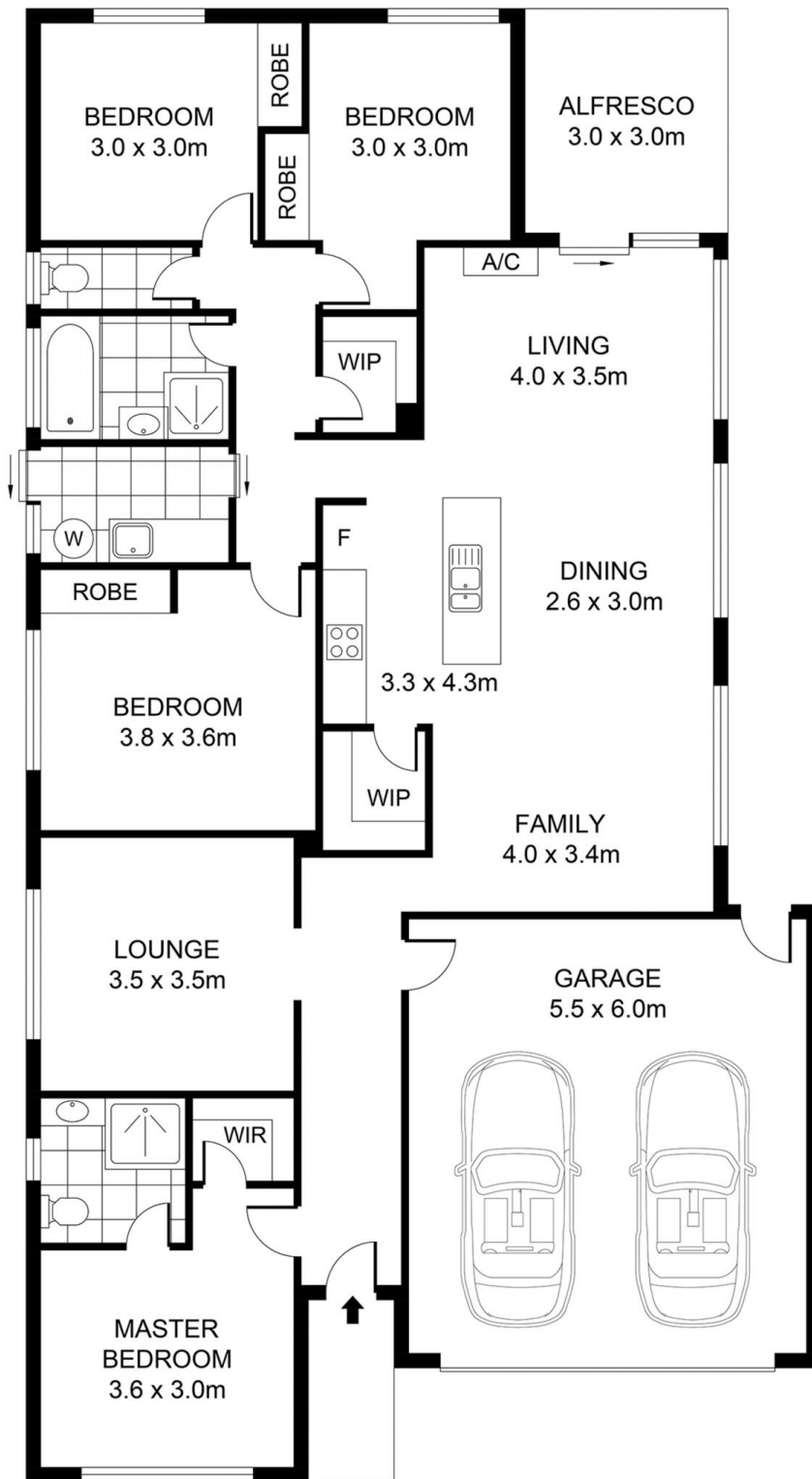
View : <https://www.bacchusmarshrealestate.com.au/sale/vic/west/maddingley/residential/house/7854878>



Steve Creese
03 5367 2333



Charlee MacPherson
03 5367 2333



PLANS SHOWN ONLY INDICATIVE OF LAYOUT. DIMENSIONS ARE APPROXIMATE.

INT : 140m² (approx)
 EXT : 9m² (approx)
 GARAGE : 33m² (approx)

18 DREVER PLACE

MADDINGLEY